

State of Wyoming Corner Record

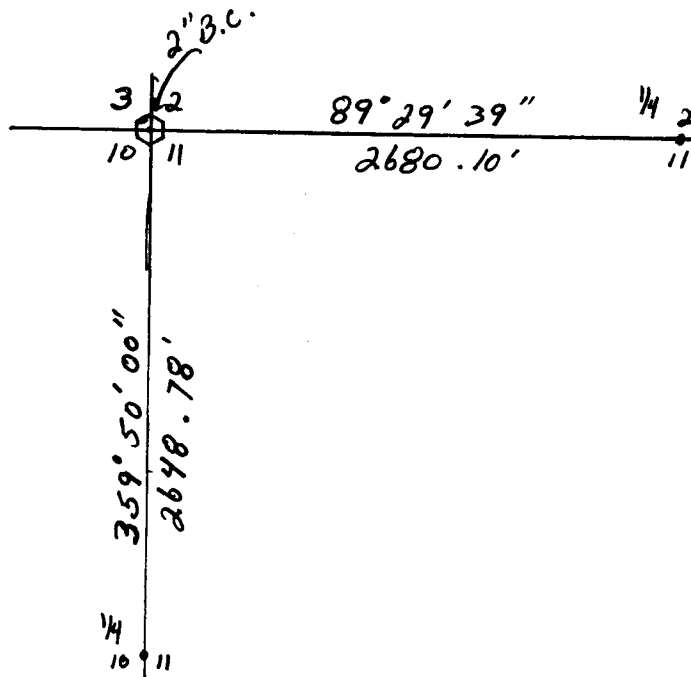
(In compliance with the *CORNER PERPETUATION AND FILING ACT*, Wyoming Statutes, 1977, Section 36-11-101, et. seq., and the Rules and Regulations of the Board of Registration for Professional Engineers and Professional Land Surveyors)

Reverse side of this form may be used if more space is needed.

Record of original survey and citation of source of historical information (if corner is lost or obliterated). Description of corner monumentation evidence found and/or monument and accessories established to perpetuate the location of this corner. Sketch of relative location of monument, accessories, and reference points with course and distance to adjacent corner(s) (if determined in this survey). Method and rationale for reestablishment of lost or obliterated corner.

ORIGINAL MONUMENT:
described as Limestone 16" x 10" x 5"

Found: 2" Brass Cap per Plat
of Buckles Subdivision



154084
RECEIVED
LARAMIE COUNTY CLERK
COURT CLERK
1994 MAR 21 AM 9:03

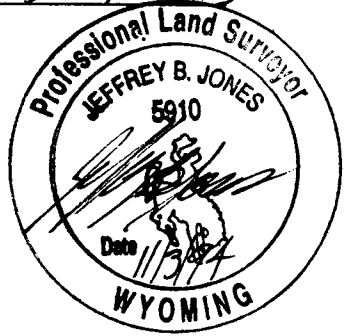
Date of Field Work: 8-22-94 Office Reference: 94154

CROSS INDEX DIAGRAM

1	2	3	4	5	6	7	8	9	10	11	12	13	14	15	16	17	18	19	20	21	22	23	24	25	
A																									A
B																									B
C	6		5			4				3					2										C
D																									D
E																									E
F																									F
G	7		8			9				10					11										G
H																									H
I																									I
J																									J
K																									K
L	18		17			16				15					14										L
M																									M
N																									N
O																									O
P	19		20			21				22					23										P
Q																									Q
R																									R
S																									S
T	28		29			28				27					26										T
U																									U
V																									V
W																									W
X	31		32			33				34					35										X
Y																									Y
Z																									Z
1	2	3	4	5	6	7	8	9	10	11	12	13	14	15	16	17	18	19	20	21	22	23	24	25	

Firm/Agency, Address
STEEL SURVEYING
SERVICES
1102 West 19th St.
Cheyenne WY 82003
Telephone Number: (307) 634-7273

This corner record was prepared by me or under my direction and supervision.
SEAL & SIGNATURE



Corner Name: Section Section: 3/2 T. 14N R. 66W; 6th P.M. Cross-Index No.: 17E
BOOK 1588 PERPETUATION ACT: March 1994

0358